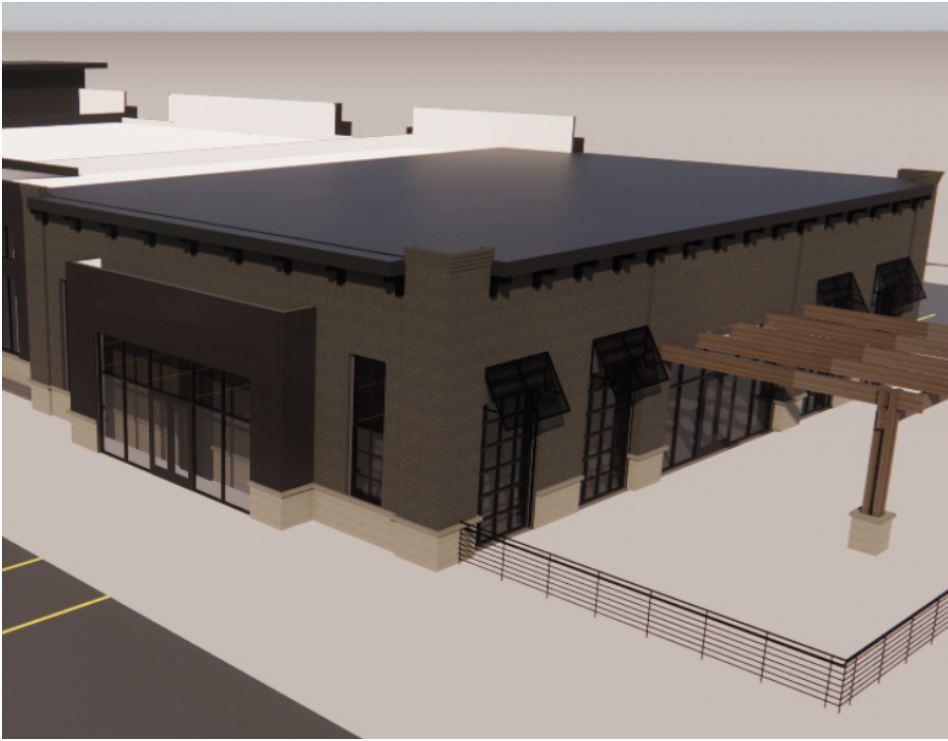




CALIBER
COMPANY

KETTLESTONE COMMERCIAL



Kettlestone Central is set to become one of the Midwest's most notable mixed use developments. Adjacent to Grand Prairie Parkway in Waukee IA, the 164 acre Kettlestone Central project will welcome hundreds of thousands of visitors each year and be home to thousands of residents living within one of the planned residential multifamily projects

 WAUKEE, IA



mapbox

© Mapbox © OpenStreetMap Improve this map