



CALIBER

COMPANY



FOR LEASE

1776 22ND STREET WEST DES MOINES

MATT SHAW
515.360.2247
matt.shaw@calibercompany.com
Licensed in IA



CALIBER
COMPANY

1776 22nd Street West Des Moines

FOR LEASE



PROPERTY DESCRIPTION

Affordable West Des Moines office conveniently located just half a mile north of I-235 with great visibility and close proximity to retail, restaurants and other businesses. 2700 sqft total available or it can be split up into two smaller suites of 1500 sqft or 1200 sqft. Available immediately.



CALIBER COMPANY

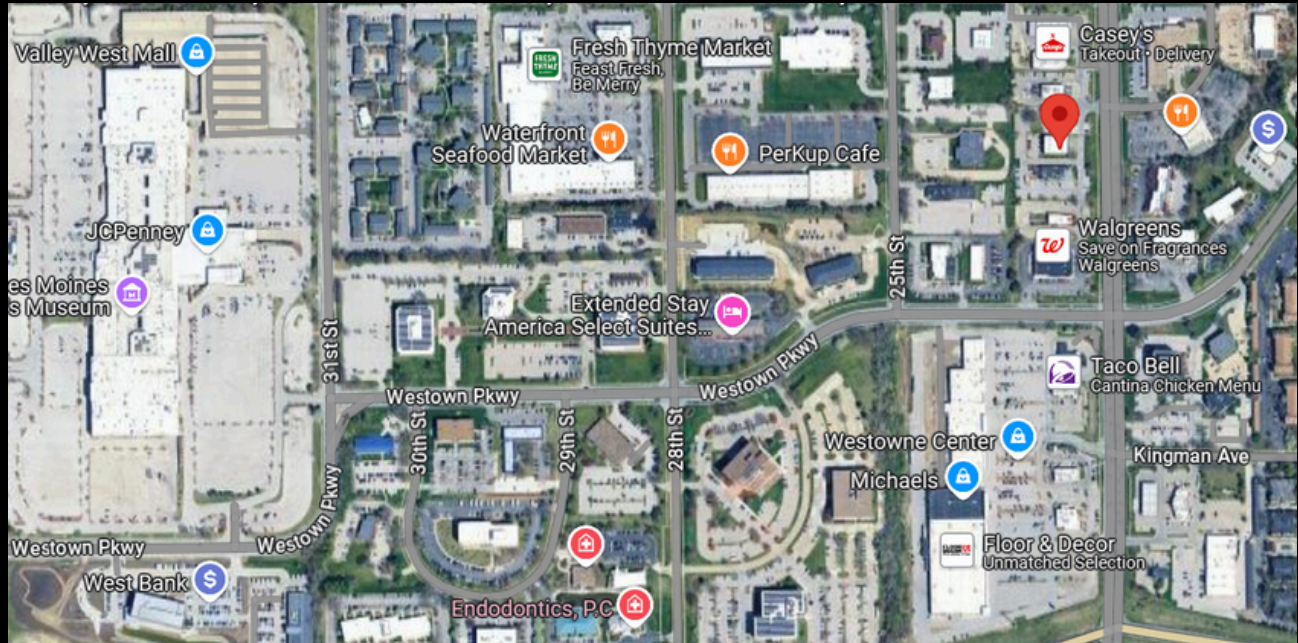
OFFERING SUMMARY

Lease Rate:	\$11.50 SF/yr (MG)
Available SF:	1,200- 2,700 SF
Building Size	12,328 SF





CALIBER COMPANY



POPULATION	1 MILE	3 MILES	5 MILES
Total Population	8,925	80,364	193,239
Average Age	36.6	39.1	38.1

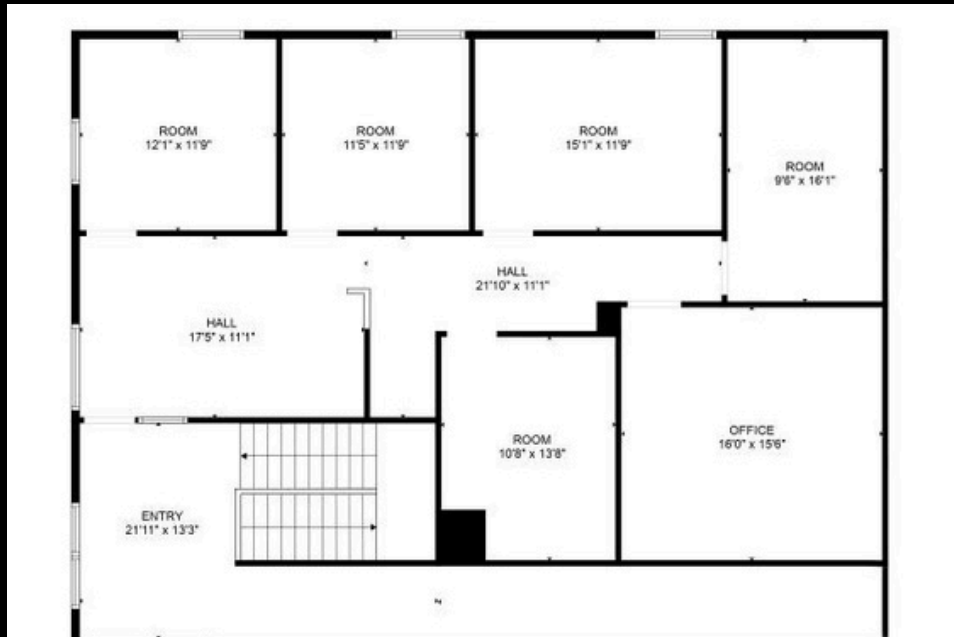
HOUSEHOLDS & INCOME	1 MILE	3 MILES	5 MILES
Total Households	3,857	35,010	82,246
Average HH Income	\$87,001	\$95,034	100,311
Average House Value	\$252,489	\$233,311	\$242,860



CALIBER COMPANY

FLOOR PLAN

SUITE 100- 1,500 SQFT



SUITE 200- 1,200 SQFT





CALIBER COMPANY

INTERIOR PHOTOS





CALIBER COMPANY

LISTING AGENTS



COMMERCIAL AGENT

MATT SHAW

matt.shaw@calibercompany.com

EMAIL MATT

(515) 360-2247





CALIBER

COMPANY



FOR LEASE
1776 22ND STREET WEST DES MOINES