



CALIBER  
COMPANY



## SPACE FOR LEASE

2102 & 2104 E 14th Street, Des Moines, IA, 50316

BLAKE PAGLIAI

515.720.6215

[blake.pagliai@calibercompany.com](mailto:blake.pagliai@calibercompany.com)

Licensed in IA

COLTON PFEIFER

515.518.0493

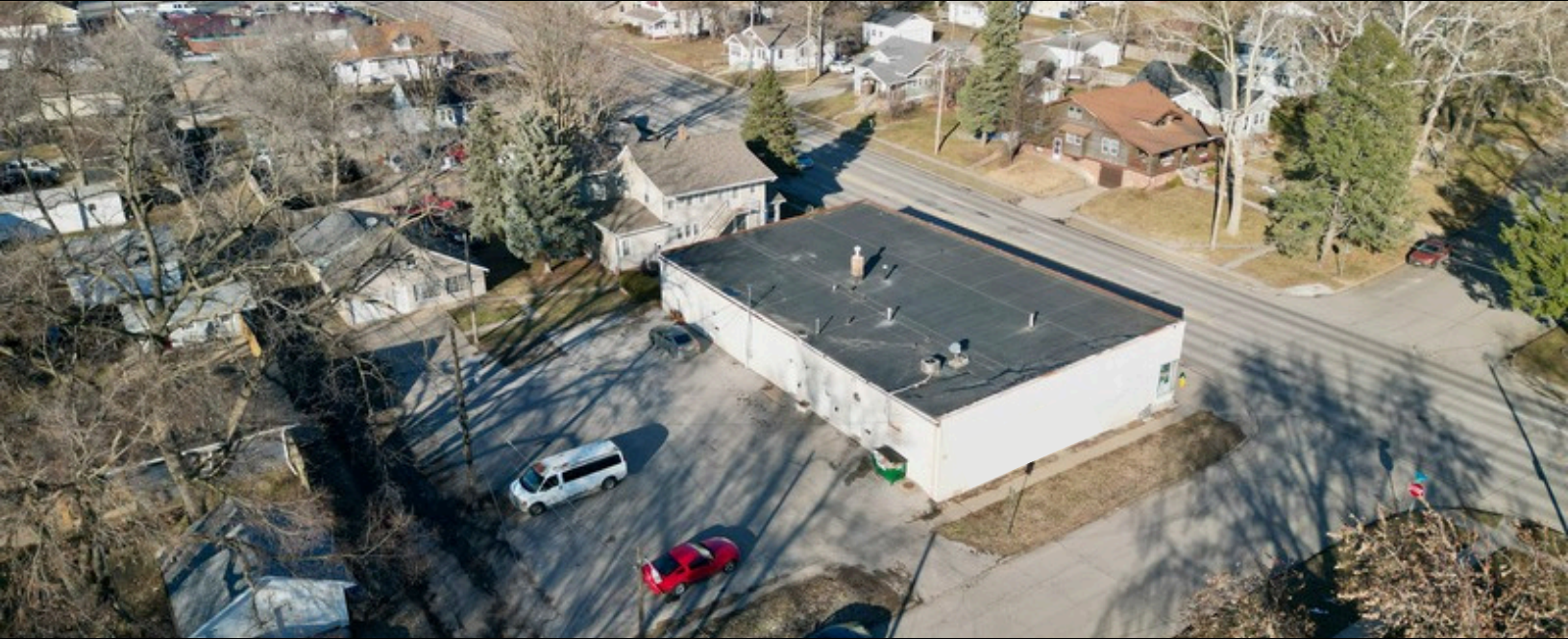
[colton.pfeifer@calibercompany.com](mailto:colton.pfeifer@calibercompany.com)

Licensed in IA



CALIBER  
COMPANY

2100 E 14th Street, Des Moines, IA, 50316 **FOR LEASE**



### PROPERTY DETAILS:

Discover recently renovated retail space along busy E 14th Street, offering great visibility and accessibility in a well-maintained building.

- Total Space: 1,950 SF (can be divided into two suites)
- Lease Rate: \$2,600/month (\$16/SF NNN)
- Restrooms: 2
- Utilities: Landlord covers water; electric and gas are separately metered
- Location: Two middle suites within 2100 E 14th Street building

This space is ideal for a variety of retail or service-oriented businesses seeking a clean, updated location in a high-traffic Des Moines corridor.



# CALIBER

COMPANY

## PROPERTY DETAILS:

Total Space:	1,950 SF
Lease Rate:	\$16/SF NNN
Restrooms	2 total
Location:	Two middle suites within 2100 E 14th Street building

