

KETTLESTONE CENTRAL RETAIL CENTER BUILDING 3




Lease Rate:
Negotiable

 1165 SE MAIN
STREET, WAUKEE, IA

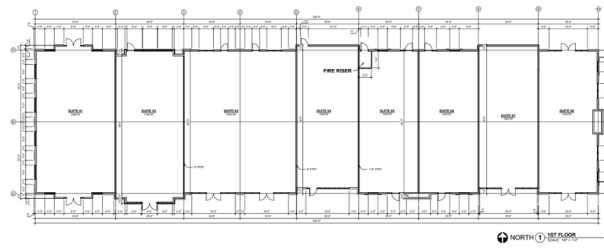
 1,450-13,772

 RETAIL

 2025

Discover 1,653 - 29,236 SQ FT of new, commercial retail space now available.

Kettlestone Central is the Midwest's most notable mixed use development! Located in the heart of Waukee Iowa, at the intersection of Grand Prairie and Westown Parkway, the 164 acre Kettlestone Central neighborhood will welcome hundreds of thousands of visitors each year and be home to thousands of residents living within one of the planned residential communities. Located in the fastest growing city in Iowa, Kettlestone Central will attract over half a million visitors each year along with being home to approximately two thousand residents. A variety of commercial opportunities are available within Kettlestone Central. Whether you're seeking highly visible and walkable retail space, a modern medical facility, or a vibrant entertainment venue, Kettlestone Central provides the perfect canvas for your vision to become reality!



LEASING AGENTS



DIRECTOR OF REALTY

JUSTIN
WASHBURN

515-238-4528



COMMERCIAL AGENT

JULIANAH
RODGERS

515-249-9260